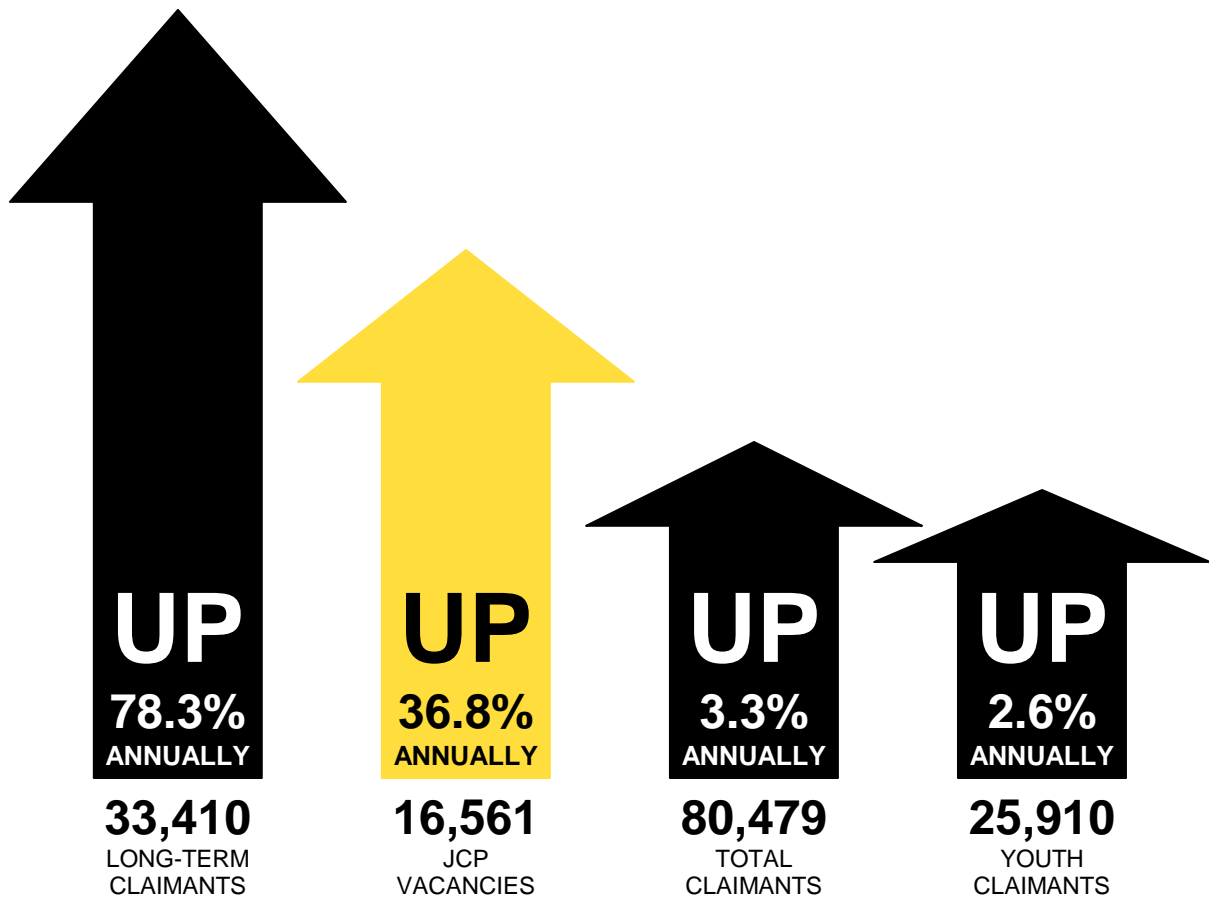


unemployment **MONITOR**

GREATER MANCHESTER, MAY 2010
USING APRIL 2010 DATA



IN THIS EDITION:

- **TOTAL JSA CLAIMANTS CONTINUES TO FALL, AT A GREATER RATE THAN THE UK**
- **LONG-TERM JOBSEEKERS CONTINUE TO INCREASE AS SHORT-TERM CLAIMANTS MOVE OFF THE REGISTER**
- **YOUTH CLAIMANTS FALL IN CONTRAST TO MARCH FIGURES**
- **JOB OPPORTUNITIES CONTINUE TO INCREASE SIGNALLING MORE STABLE GROWTH IN THE LABOUR MARKET**

CONTACT:

t: 0161 237 4024

e: christopher.pope@neweconomymanchester.com

w: <http://www.neweconomymanchester.com/>

twitter: mancmonitor

CONTENTS

MONITOR FOCUS	3
JOBSEEKER'S ALLOWANCE CLAIMANTS	4
TOTAL CLAIMANTS	4
CLAIMANTS BY GENDER	5
LONG-TERM CLAIMANTS	6
YOUTH CLAIMANTS	7
JOBSEEKER'S ALLOWANCE FLOWS	8
TOTAL CLAIMANT FLOWS	8
OCCUPATION	9
REASON FOR OFF-FLOWS	10
JOBCENTRE PLUS VACANCIES	11
TOTAL VACANCIES	12
OCCUPATION AND INDUSTRY	13
TECHNICAL NOTE	13
GLOSSARY	14
SOURCES	15

Monitor FOCUS

Claimant count continues to fall into April

Official figures released on 12th May show that unemployment fell in Greater Manchester last month, the third successive month that jobs queues have shortened.

The number of jobseeker's allowance claimants in Greater Manchester fell by 1,820 to 80,480 in April 2010. This is a fall of 2.2% on March, but the figure is still 3.3% up on last year. Jobseeker's allowance claimants decreased in Greater Manchester at a slightly lower rate than both the national and regional averages which both fell by 2.9%. 5.0% of Greater Manchester's working age population are now claiming unemployment benefit, down from 5.1% last month.

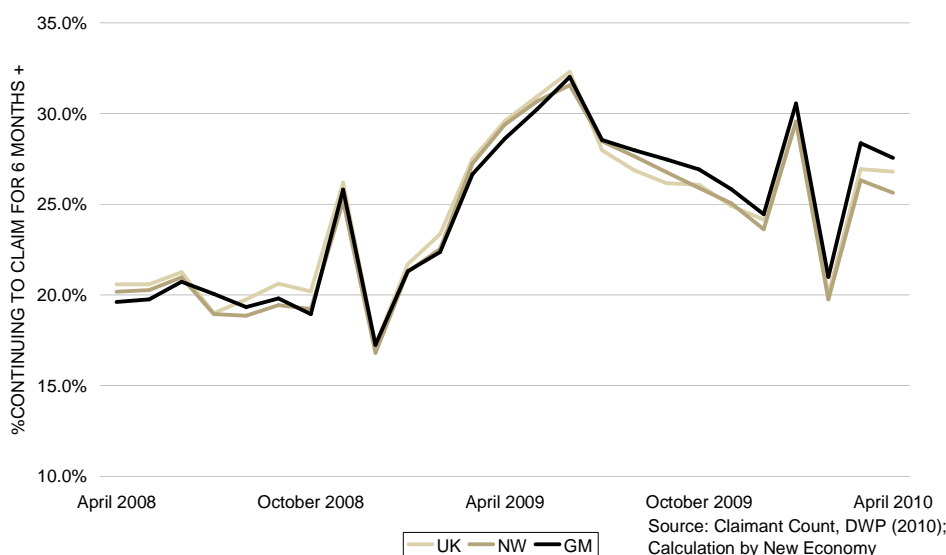
Figures released simultaneously by Jobcentre Plus show that the number of vacancies reported to them in Greater Manchester increased to 16,560, up over 36% on this time last year, significantly higher than the regional (19%) and national (25%) increases.

Figure 1: Annual and Monthly Change in JSA and Vacancy Levels, April 2008 – April 2009 and March 2009 – April 2009

Area	Total JSA Claimants			Long-term (6 months +) JSA Claimants			Youth (16-24) JSA Claimants			JCP Reported Vacancies		
	Number	Annual Change	Monthly Change	Number	Annual Change	Monthly Change	Number	Annual Change	Monthly Change	Number	Annual Change	Monthly Change
Greater Manchester	80,479	2,571 (3.3%)	-1,821 (-2.2%)	33,410	14,675 (78.3%)	455 (1.4%)	25,910	665 (2.6%)	-1,170 (-4.3%)	16,561	4,458 (36.8%)	-1,750 (-9.6%)

Long-term unemployment shows continued rise

Long-term unemployment (those claiming over 6 months) continued to rise this month by 455 to 33,410, despite a reduction in the overall number of jobseekers. This is the highest number of long-term claimants since May 1997.



This reinforces the knowledge that long-term claimants are furthest from the labour market. The number of people leaving JSA after 6 months is around 28% of the total number of off-flows, despite long-term claimants making up around 41.5% of all claimants.

New Economy estimates that across Greater

Manchester, around 27.5% of individuals that began their claim 6 months ago are still claiming JSA. This shows a decrease on last year (28.6%) but shows a significant increase on previous years (19.6% in April 2008). This is also ahead of both the national (26.8%) and regional averages (25.6%).

The remainder of this document provides detailed analysis of jobseeker's allowance and vacancy data across Greater Manchester.

JOBSEEKER'S ALLOWANCE CLAIMANTS: TOTAL CLAIMANTS

Figure 1: JSA Claimant Count by rate, April 2009 – April 2010

District	Ward	JSA Claimants			
		Number	Monthly Change (%)	Annual Change (%)	Rate
		Apr 10	Mar10 – Apr10	Apr09 – Apr10	Apr 10
Rochdale	Central and Falinge	840	-2.0%	7.8%	13.3%
Stockport	Brinnington	725	-0.7%	10.2%	11.9%
Oldham	Coldhurst	732	-1.3%	15.5%	10.0%
Salford	Langworthy	387	-2.3%	9.9%	10.0%
Manchester	Benchill	701	0.7%	13.6%	9.7%
Salford	Broughton	480	3.7%	23.4%	9.4%
Bolton	Central	620	-0.8%	9.5%	9.1%
Oldham	Alexandra	581	0.3%	13.7%	9.1%
Oldham	St. Marys	631	-2.9%	15.8%	9.1%
Manchester	Moss Side	899	-0.9%	13.7%	8.9%
Bolton		8,036	-2.5%	3.0%	5.0%
Bury		4,540	-3.0%	-0.4%	4.0%
Manchester		18,210	-1.0%	6.0%	5.7%
Oldham		7,186	-2.5%	3.8%	5.4%
Rochdale		7,479	-1.4%	2.7%	5.9%
Salford		7,681	-2.4%	8.0%	5.4%
Stockport		6,339	-3.5%	0.9%	3.7%
Tameside		6,802	-1.7%	5.2%	5.1%
Trafford		4,684	-2.1%	3.6%	3.6%
Wigan		9,522	-3.6%	-2.7%	5.0%
Greater Manchester		80,479	-2.2%	3.3%	5.0%
North West		191,828	-2.9%	-1.7%	4.5%
United Kingdom		1,568,128	-2.9%	0.7%	4.1%

Source: Claimant Count, DWP, 2010

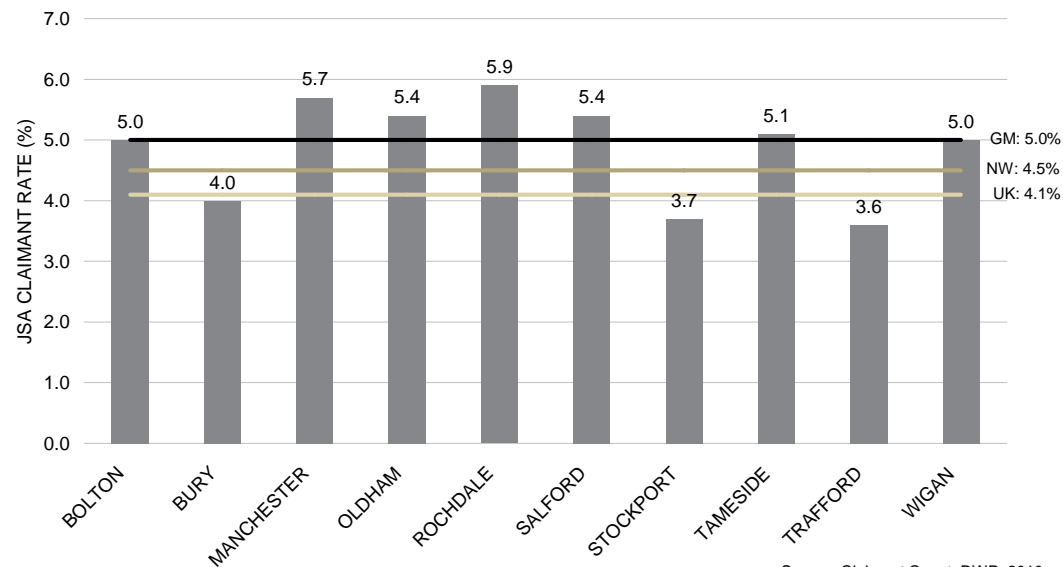
The number of JSA claimants in Greater Manchester fell by 1,821 (2.2%) to 80,479 in April 2010, a 5.0% claimant rate. Comparatively, the North West (4.5%) and UK (4.1%) continued to experience lower claimant rates.

The highest JSA claimant rate continued to be in Rochdale (5.9%), with Central and Falinge in Rochdale continuing to have the highest ward claimant rate (13.3%), falling by 2.0% this month.

All of the GM authorities experienced a monthly decrease in JSA claimants, with Wigan experiencing the greatest decrease (3.6%). The monthly reduction in Greater Manchester (2.2%) was smaller than the national and regional average (2.9%).

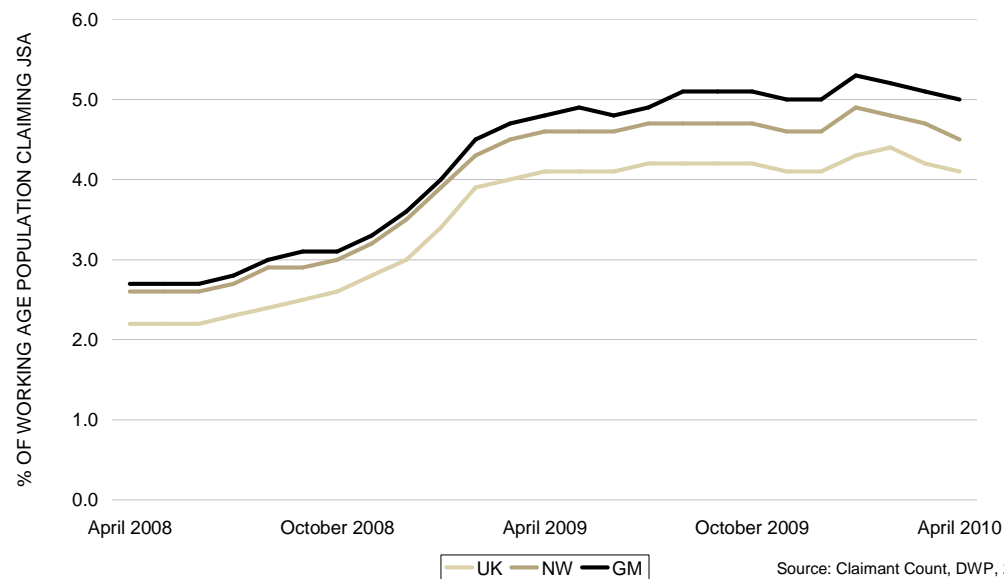
As can be seen from figure 3, claimant rates are around twice as high as they were 2 years ago. However, for the past 2 months, claimant rates have consistently fallen.

Figure 2: JSA Claimant Rate by district, April 2010



Source: Claimant Count, DWP, 2010

Figure 3: Historical JSA Claimant Rate April 2008 – April 2010



Source: Claimant Count, DWP, 2010

JOBSEEKER'S ALLOWANCE CLAIMANTS: CLAIMANTS BY GENDER

Figure 4: Male JSA Claimant Count by rate, April 2009 – April 2010

District	Ward	Male JSA Claimants			
		Number	Monthly Change (%)	Annual Change (%)	Rate
		Apr 10	Mar10 – Apr10	Apr09 – Apr10	Apr 10
Rochdale	Central and Falinge	659	-0.5%	8.7%	18.6%
Stockport	Brinnington	559	0.5%	12.7%	17.6%
Manchester	Benchill	514	-0.8%	5.5%	15.1%
Oldham	Coldhurst	558	-2.1%	10.5%	14.2%
Wigan	Norley	407	-3.3%	-11.1%	13.7%
Oldham	Alexandra	433	-1.4%	8.3%	13.5%
Salford	Langworthy	281	-3.4%	1.4%	13.5%
Bolton	Central	471	-1.1%	6.3%	13.1%
Oldham	St. James	308	-3.1%	8.1%	13.0%
Manchester	Moss Side	673	-0.6%	12.0%	12.9%
Bolton		5,890	-3.2%	-0.3%	7.1%
Bury		3,332	-3.2%	-2.9%	5.7%
Manchester		13,400	-1.5%	1.9%	7.8%
Oldham		5,346	-3.0%	1.6%	7.7%
Rochdale		5,496	-2.0%	-0.4%	8.2%
Salford		5,755	-3.0%	5.8%	7.6%
Stockport		4,719	-4.4%	0.5%	5.3%
Tameside		5,035	-3.0%	1.5%	7.2%
Trafford		3,483	-2.5%	2.6%	5.1%
Wigan		7,137	-3.9%	-4.3%	7.1%
Greater Manchester		59,593	-2.8%	0.6%	7.0%
North West		141,814	-3.5%	-4.7%	6.4%
United Kingdom		1,134,031	-3.4%	-2.0%	5.7%

Source: Claimant Count, DWP, 2010

The male JSA claimant count decreased by 1,714 (2.8%) to 59,593 in GM in April 2010 (a 7.0% claimant rate). This rate was higher than the North West (6.4%) or the UK (5.7%). Greater Manchester's male claimant levels fell by 2.8% this month – lower than the fall in the North West (3.5%) and UK (3.4%).

Across the local authorities, the highest male claimant rate continued to be experienced in Rochdale (8.2%), followed by Manchester (7.8%). However, Oldham (7.7%) had three wards in the top ten rates (Coldhurst, Alexandra and St. James), whereas Rochdale only had one (Central and Falinge).

All authorities saw monthly decreases in the male claimant count, with Stockport experiencing the greatest proportional decrease of 4.4% (218 claimants).

Figure 5: Female JSA Claimant Count by rate, April 2009 – April 2010

District	Ward	Female JSA Claimants			
		Number	Monthly Change (%)	Annual Change (%)	Rate
		Apr 10	Mar10 – Apr10	Apr09 – Apr10	Apr 10
Rochdale	Central and Falinge	181	-7.2%	4.6%	6.5%
Salford	Langworthy	106	1.0%	41.3%	6.0%
Stockport	Brinnington	166	-4.6%	2.5%	5.7%
Salford	Broughton	122	3.4%	23.2%	5.3%
Oldham	Coldhurst	174	1.2%	34.9%	5.1%
Oldham	St. Marys	166	-2.4%	16.9%	5.0%
Manchester	Benchill	187	5.1%	43.8%	4.9%
Manchester	Newton Heath	179	3.5%	54.3%	4.9%
Wigan	Ince	149	2.8%	26.3%	4.9%
Manchester	Gorton South	201	3.1%	40.6%	4.8%
Bolton		2,146	-0.6%	13.5%	2.8%
Bury		1,208	-2.6%	7.1%	2.3%
Manchester		4,810	0.3%	19.4%	3.2%
Oldham		1,840	-1.0%	10.4%	2.9%
Rochdale		1,983	0.4%	12.4%	3.3%
Salford		1,926	-0.6%	14.8%	2.9%
Stockport		1,620	-0.7%	2.3%	2.0%
Tameside		1,767	1.9%	17.6%	2.7%
Trafford		1,201	-0.9%	6.8%	1.9%
Wigan		2,385	-2.6%	2.4%	2.7%
Greater Manchester		20,886	-0.5%	11.7%	2.7%
North West		50,014	-1.1%	8.1%	2.5%
United Kingdom		434,097	-1.5%	8.3%	2.4%

Source: Claimant Count, DWP, 2010

The female JSA claimant count decreased by 107 (0.5%) to 20,886 in GM in April 2010 (a 2.7% claimant rate). This rate was higher than the North West (2.5%) and the UK (2.4%), but closer to the national average than the male claimant rate.

Across the local authorities, the highest female claimant rate was experienced in Rochdale (3.3%), with Manchester experiencing the next highest claimant rate of 3.2%. Manchester has seen the greatest annual increase in female claimants of the districts – a 19.4% rise from 4,027 claimants in April 2009 to 4,810 in April 2010.

Three districts experienced a monthly increase in their female claimant counts, with Tameside experiencing the greatest increase of 1.9% to 1,767 female claimants.

JOBSEEKER'S ALLOWANCE CLAIMANTS: LONG-TERM CLAIMANTS

Figure 6: Long-term JSA claimants (over 6 months) by proportion of total JSA claimants, April 2009 – April 2010

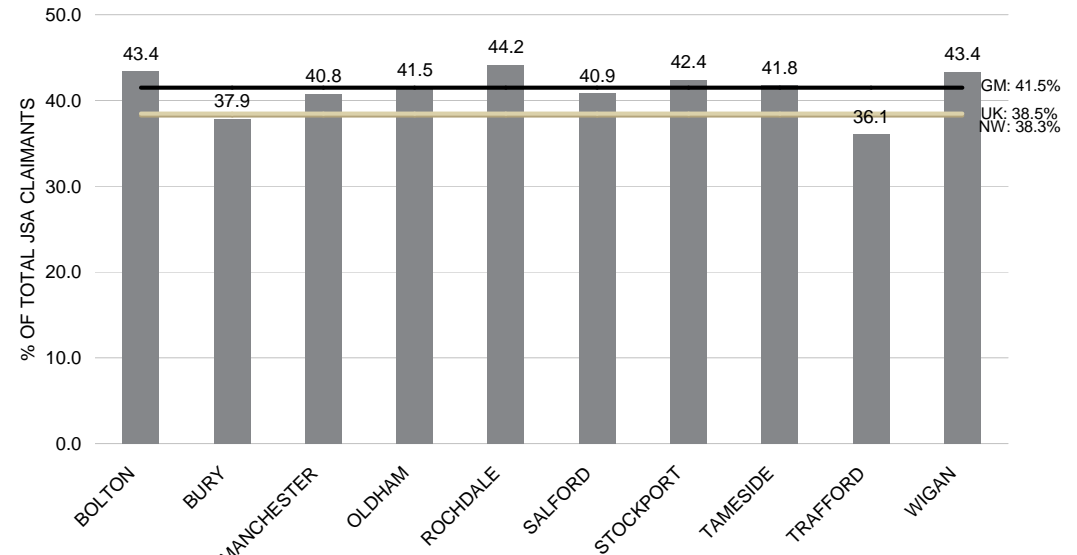
District	Ward	Long-term JSA Claimants			
		Number	Monthly Change (%)	Annual Change (%)	% of total JSA
Stockport	Brinnington	395	1.3%	83.7%	54.5%
Rochdale	Central and Falinge	455	-2.2%	59.6%	54.2%
Salford	Walkden North	280	5.7%	93.1%	53.5%
Wigan	Norley	265	0.0%	60.6%	51.9%
Rochdale	Balderstone	245	-3.9%	63.3%	51.1%
Salford	Little Hulton	260	2.0%	73.3%	50.7%
Bolton	Breightmet	275	-1.8%	103.7%	49.7%
Tameside	Denton South	185	0.0%	76.2%	49.5%
Wigan	Newtown	260	2.0%	48.6%	49.3%
Oldham	St. James	210	2.4%	90.9%	49.3%
Bolton		3,490	3.1%	83.7%	43.4%
Bury		1,720	1.2%	81.1%	37.9%
Manchester		7,425	3.3%	62.8%	40.8%
Oldham		2,985	0.7%	85.4%	41.5%
Rochdale		3,305	-0.9%	85.7%	44.2%
Salford		3,140	2.1%	85.8%	40.9%
Stockport		2,690	-0.4%	95.6%	42.4%
Tameside		2,840	0.9%	83.8%	41.8%
Trafford		1,690	3.7%	94.3%	36.1%
Wigan		4,130	-0.7%	68.6%	43.4%
Greater Manchester		33,410	1.4%	78.3%	41.5%
North West		73,420	0.7%	49.4%	38.3%
United Kingdom		603,730	1.6%	60.6%	38.5%

Source: Claimant Count, DWP, 2010

The long-term (over 6 months) JSA claimant count stood at 33,410 in GM in April 2010 (41.5% of the total JSA claimant level). This was higher than the North West (38.3%) and UK (38.5%) proportions. Rochdale had the highest proportion of long-term claimants (44.2%), with two of its wards within the top ten highest proportions. In six wards across Greater Manchester, more than half of all claimants had been claiming for 6 months or more.

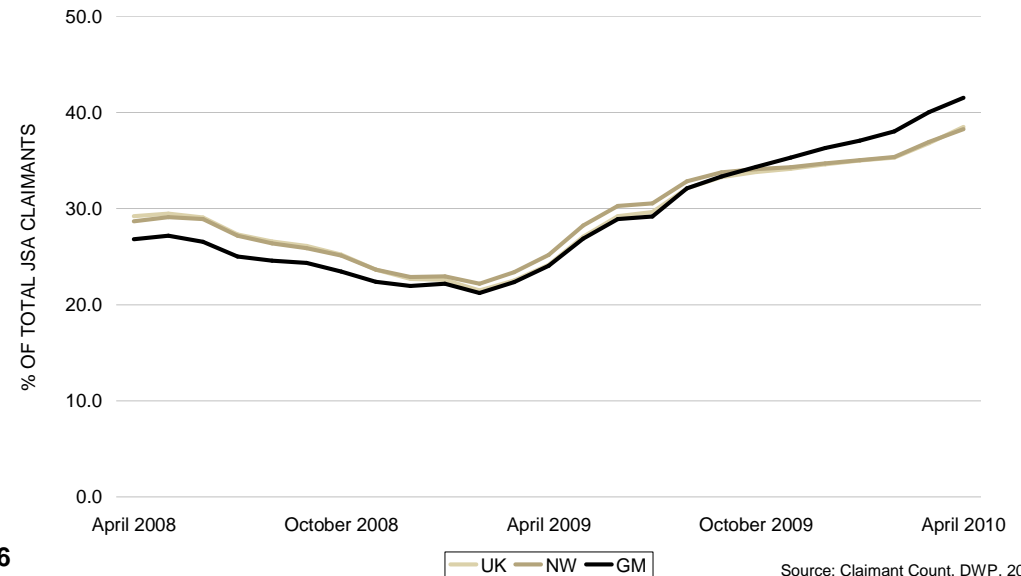
As figure 8 shows, the on-flow of new claimants during the early part of the recession reduced the proportion of long-term claimants, but now the proportion in Greater Manchester is higher than the North West or the UK.

Figure 7: Long-term JSA claimants as a proportion of total JSA claimants by district, April 2010



Source: Claimant Count, DWP, 2010

Figure 8: Historical Long-term JSA claimants as a proportion of total JSA claimants, April 2008 – April 2010



Source: Claimant Count, DWP, 2010

JOBSEEKER'S ALLOWANCE CLAIMANTS: YOUTH CLAIMANTS

Figure 9: Youth JSA claimants (16 to 24 years old) by proportion of total JSA claimants, April 2009 – April 2010

District	Ward	Youth JSA Claimants			
		Number	Monthly Change (%)	Annual Change (%)	% of total JSA
Oldham	Crompton	85	0.0%	41.7%	41.7%
Tameside	Denton West	80	14.3%	-5.9%	40.4%
Manchester	Withington	140	0.0%	27.3%	39.1%
Bury	Radcliffe South	145	-6.5%	7.4%	38.9%
Oldham	Shaw	95	-9.5%	26.7%	38.8%
Rochdale	Heywood South	155	-6.1%	-3.1%	38.8%
Manchester	Moston	170	-5.6%	-5.6%	38.7%
Oldham	Chadderton South	125	-3.8%	4.2%	38.3%
Wigan	Norley	195	-4.9%	-15.2%	38.2%
Tameside	Droylsden East	145	7.4%	11.5%	38.2%
Bolton		2,490	-3.9%	2.0%	31.0%
Bury		1,515	-7.1%	-4.4%	33.4%
Manchester		5,760	-3.3%	5.1%	31.6%
Oldham		2,420	-4.7%	5.0%	33.7%
Rochdale		2,595	-3.0%	8.1%	34.7%
Salford		2,380	-5.2%	1.3%	31.0%
Stockport		1,895	-6.0%	-0.5%	29.9%
Tameside		2,365	-2.9%	9.5%	34.8%
Trafford		1,325	-2.9%	6.4%	28.3%
Wigan		3,175	-5.8%	-5.9%	33.3%
Greater Manchester		25,910	-4.3%	2.6%	32.2%
North West		58,580	-5.4%	-7.6%	30.5%
United Kingdom		451,895	-5.9%	-3.8%	28.8%

Source: Claimant Count, DWP, 2010

The youth (aged 16-24) JSA claimant count stood at 25,910 in GM in April 2010 (32.2% of the total JSA claimant level). This was higher than the North West (30.5%) and UK (28.8%) proportions. Tameside experienced the highest proportion of youth claimants (34.8%), yet Crompton in Oldham continues to have the highest ward proportion – 41.7%.

As figure 11 shows, the proportion of youth claimants shows a continuing pattern that follows the academic year. If the trend continues, the proportion of youth claimants may soon begin to show a slowdown in the rate of reduction.

Figure 10: JSA Youth claimants as a proportion of total JSA claimants by district, April 2010

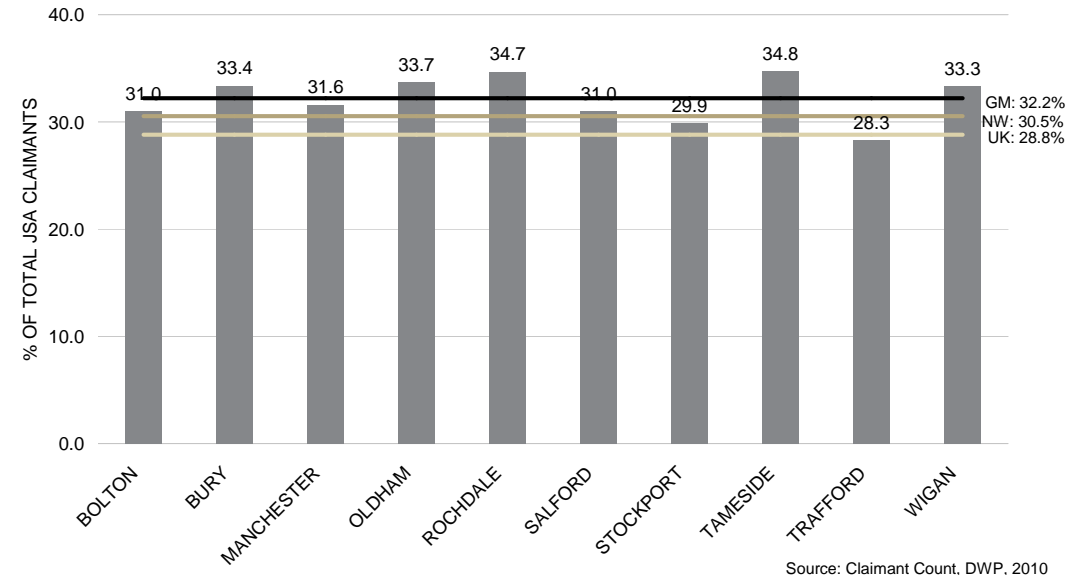
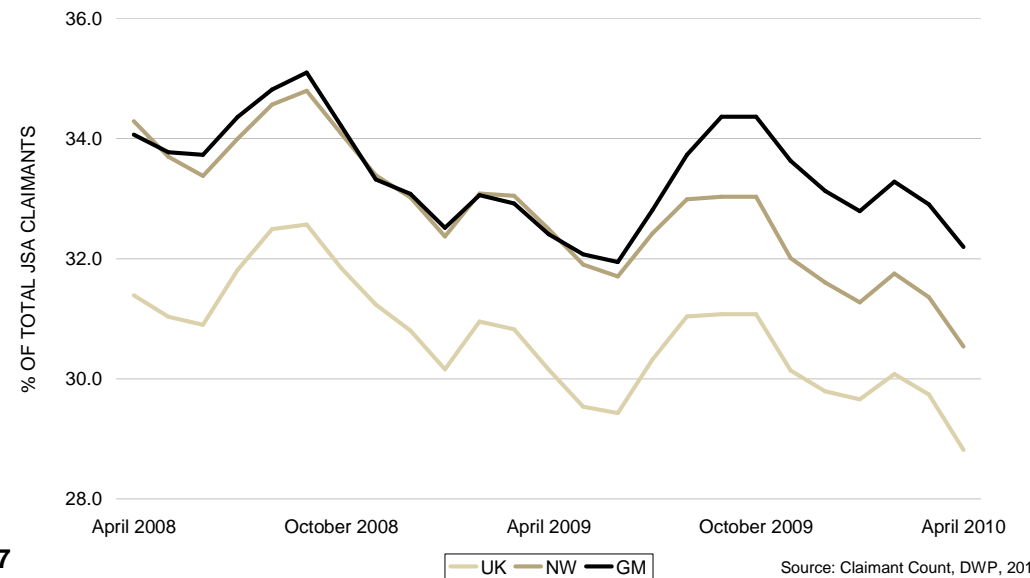


Figure 11: Historical JSA Youth claimants as a proportion of total JSA claimants, April 2008 – April 2010



JOBSEEKER'S ALLOWANCE FLOWS: TOTAL CLAIMANT FLOWS

Figure 12: JSA claimant flows by age and duration, April 2010

Age	Off-Flow Duration of Claim					Total On-Flows	Net Flows
	1 to 26 weeks	26 to 52 weeks	52 to 104 weeks	104 weeks and above	Total		
Under 17	5	0	0	0	10	20	10
17	120	5	0	0	120	100	-20
18	620	115	0	0	750	820	70
19	745	220	45	0	1,015	795	-220
20-24	2,930	945	210	5	4,105	3,325	-780
25-29	1,690	380	210	15	2,295	2,000	-295
30-34	1,140	260	160	15	1,570	1,465	-105
35-39	920	245	135	10	1,320	1,245	-75
40-44	865	190	140	15	1,215	1,180	-35
45-49	720	200	140	10	1,075	1,000	-75
50-54	565	145	105	15	820	800	-20
55-59	425	130	65	10	635	545	-90
Over 60	150	35	10	0	195	145	-50
Total	10,920	2,875	1,225	100	15,120	13,450	-1,670

Source: Claimant Count Flows, DWP, 2010. Note: Columns may not sum due to rounding

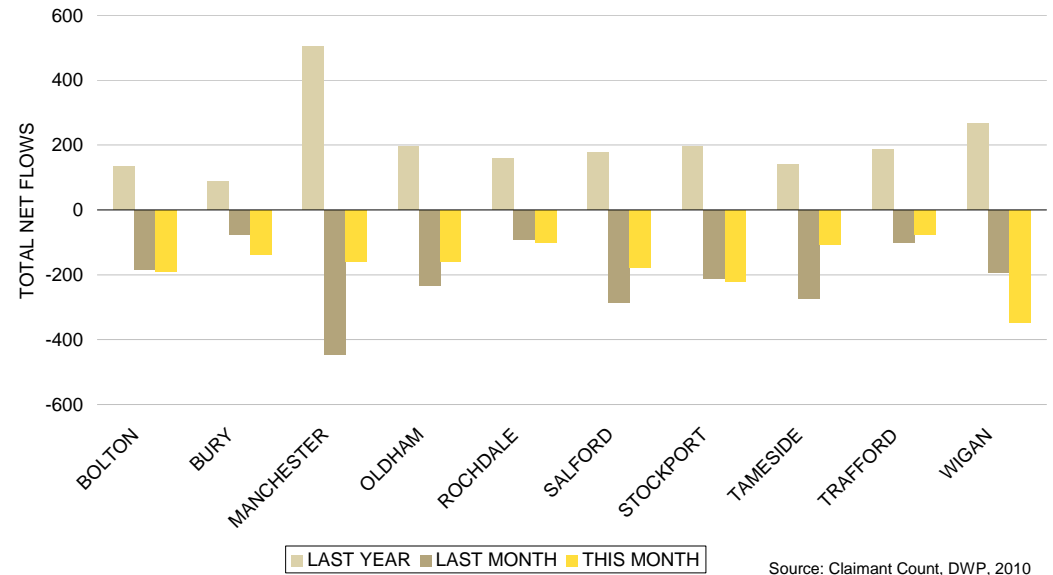
The total net flow of JSA claimants in GM was an off-flow of 1,670, compared to last month's net off-flow of 2,100. The greatest number of net off-flows occurred in the 20-24 year old age bracket (780 net off-flows). Comparatively, the 18 year old age group saw net on-flows of 70.

The majority of off-flows from JSA in GM (72.2%) occurred within the first 6 months of claiming. This proportion has seen a slight decrease from the March level of 74.7%.

Figures 13 and 14 highlight how the on-flows and off-flows have altered over the course of the last two years. All districts have experienced net off-flows this month, continuing the off-flows experienced in March 2010. Off-flows have fallen for the first time since January and total net flows have seen a significant change since last year, when Greater Manchester experienced some of the highest number of net on-flows yet recorded.

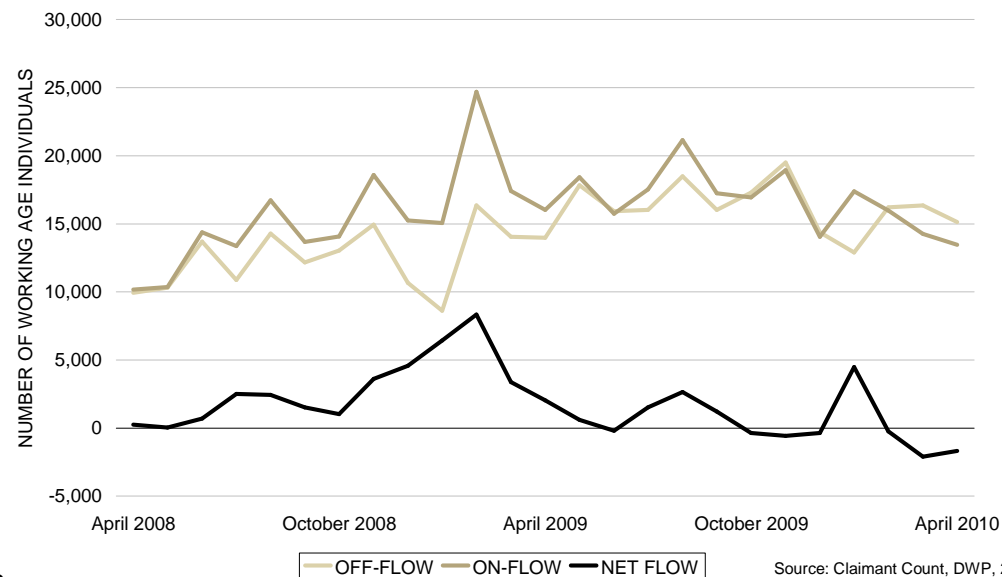
On-flows have mainly come through elementary trades (2,930 on-flows) and sales occupations (2,135), and leave mainly into similar occupations.

Figure 13: Net flows of JSA claimants by district, April 2009 – April 2010



Source: Claimant Count, DWP, 2010

Figure 14: On-flows, off-flows and net flows of JSA claimants in Greater Manchester, April 2008 – April 2010



Source: Claimant Count, DWP, 2010

Figure 15: On-flows of JSA claimants by usual occupation, April 2009 – April 2010

Occupation	On-Flow			
	Number	Monthly Change (%)	Annual Change (%)	Percentage of total
	Apr 10	Mar10 – Apr10	Apr09 – Apr10	Apr 10
00 : Occupation unknown	345	13.1%	76.9%	2.6%
11 : Corporate Managers	440	0.0%	-38.9%	3.3%
12 : Managers and Proprietors in Agriculture	100	-13.0%	-13.0%	0.7%
21 : Science and Technology Prof.	190	-2.6%	-26.9%	1.4%
22 : Health Prof.	5	-50.0%	-50.0%	0.0%
23 : Teaching and Research Prof.	135	28.6%	0.0%	1.0%
24 : Business and Public Service Prof.	115	-14.8%	-39.5%	0.9%
31 : Science and Technology Assoc. Prof.	170	0.0%	-26.1%	1.3%
32 : Health and Social Welfare Assoc. Prof.	115	9.5%	4.5%	0.9%
33 : Protective Service Occ.	15	50.0%	0.0%	0.1%
34 : Culture, Media and Sports Occ.	240	-17.2%	-25.0%	1.8%
35 : Business and Public Service Assoc Prof.	250	-7.4%	-30.6%	1.9%
41 : Administrative Occ.	1,115	0.0%	-21.8%	8.3%
42 : Secretarial and Related Occ.	155	-11.4%	-34.0%	1.2%
51 : Skilled Agricultural Trades	95	-9.5%	-24.0%	0.7%
52 : Skilled Metal and Electronic Trades	500	6.4%	-25.4%	3.7%
53 : Skilled Construction and Building Trades	730	-12.6%	-29.5%	5.4%
54 : Textiles, Printing, Other Skilled Trades	170	-27.7%	-33.3%	1.3%
61 : Caring Personal Service Occ.	570	-2.6%	-1.7%	4.2%
62 : Leisure and Other Personal Service Occ.	195	-2.5%	-4.9%	1.4%
71 : Sales Occ.	2,135	-8.2%	13.3%	15.9%
72 : Customer Service Occ.	410	-6.8%	-22.6%	3.0%
81 : Process, Plant and Machine Operatives	445	-11.0%	-35.0%	3.3%
82 : Transport and Mobile Machine Drivers and Operatives	665	-12.5%	-37.0%	4.9%
91 : Elementary Trades, Plant and Storage Related Occ.	2,930	-3.5%	-12.9%	21.8%
92 : Elementary Administration and Service Occ.	1,210	-8.7%	-6.9%	9.0%
TOTAL	13,450	-5.6%	-16.0%	100.0%

Source: Claimant Count Flows, DWP, 2010

JOBSEEKER'S ALLOWANCE FLOWS: OCCUPATION

Figure 16: Off-flows of JSA claimants into employment by sought occupation, April 2009 – April 2010

Occupation	Off-Flow into Employment			
	Number	Monthly Change (%)	Annual Change (%)	Percentage of total
	Apr 10	Mar10 – Apr10	Apr09 – Apr10	Apr 10
00 : Occupation unknown	60	0.0%	-	0.9%
11 : Corporate Managers	290	-15.9%	-6.5%	4.5%
12 : Managers and Proprietors in Agriculture	60	-14.3%	-14.3%	0.9%
21 : Science and Technology Prof.	130	-3.7%	52.9%	2.0%
22 : Health Prof.	5	0.0%	-	0.1%
23 : Teaching and Research Prof.	50	-44.4%	42.9%	0.8%
24 : Business and Public Service Prof.	75	-16.7%	-21.1%	1.2%
31 : Science and Technology Assoc. Prof.	105	-12.5%	31.3%	1.6%
32 : Health and Social Welfare Assoc. Prof.	50	-28.6%	42.9%	0.8%
33 : Protective Service Occ.	15	200.0%	50.0%	0.2%
34 : Culture, Media and Sports Occ.	145	-14.7%	45.0%	2.3%
35 : Business and Public Service Assoc Prof.	160	-11.1%	-5.9%	2.5%
41 : Administrative Occ.	605	-13.6%	3.4%	9.5%
42 : Secretarial and Related Occ.	80	-33.3%	-20.0%	1.3%
51 : Skilled Agricultural Trades	80	45.5%	45.5%	1.3%
52 : Skilled Metal and Electronic Trades	335	8.1%	91.4%	5.2%
53 : Skilled Construction and Building Trades	450	-28.0%	32.4%	7.0%
54 : Textiles, Printing, Other Skilled Trades	130	23.8%	52.9%	2.0%
61 : Caring Personal Service Occ.	220	-15.4%	33.3%	3.4%
62 : Leisure and Other Personal Service Occ.	95	-9.5%	26.7%	1.5%
71 : Sales Occ.	730	-3.3%	47.5%	11.4%
72 : Customer Service Occ.	230	-11.5%	15.0%	3.6%
81 : Process, Plant and Machine Operatives	275	-12.7%	22.2%	4.3%
82 : Transport and Mobile Machine Drivers and Operatives	455	-10.8%	3.4%	7.1%
91 : Elementary Trades, Plant and Storage Related Occ.	1,175	-8.6%	26.3%	18.4%
92 : Elementary Administration and Service Occ.	370	-11.9%	19.4%	5.8%
TOTAL	6,385	-10.8%	23.5%	100.0%

Source: Claimant Count Flows, DWP, 2010

JOBSEEKER'S ALLOWANCE FLOWS: REASONS FOR OFF-FLOWS

Figure 17: Reason for off-flows from the JSA claimant count, April 2009 – April 2010

Reason for off-flow	JSA Claimant Off-Flows			
	Number	Monthly Change (%)	Annual Change (%)	Percent of total
	Apr 10	Mar10 – Apr10	Apr09 – Apr10	Apr 10
Found work or increased work to more than 16 hours a week	6,385	-10.8%	23.5%	42.2%
Claimed benefit other than JSA	415	-11.7%	-11.7%	2.7%
Claimed Income Support	155	-11.4%	0.0%	1.0%
Claimed Incapacity Benefit	105	-8.7%	-27.6%	0.7%
Claimed another benefit	140	-12.5%	-12.5%	0.9%
Government supported training	365	25.9%	-70.1%	2.4%
Education or approved training	60	-29.4%	-33.3%	0.4%
Gone abroad	475	5.6%	-10.4%	3.1%
Ceased claiming	215	-2.3%	19.4%	1.4%
Failed to sign	5,080	-2.6%	17.1%	33.6%
Other reasons	420	-10.6%	-5.6%	2.8%
Retirement age reached	10	-71.4%	-50.0%	0.1%
Not known	1,710	-14.1%	11.8%	11.3%
All reasons	15,120	-7.6%	8.3%	100.0%

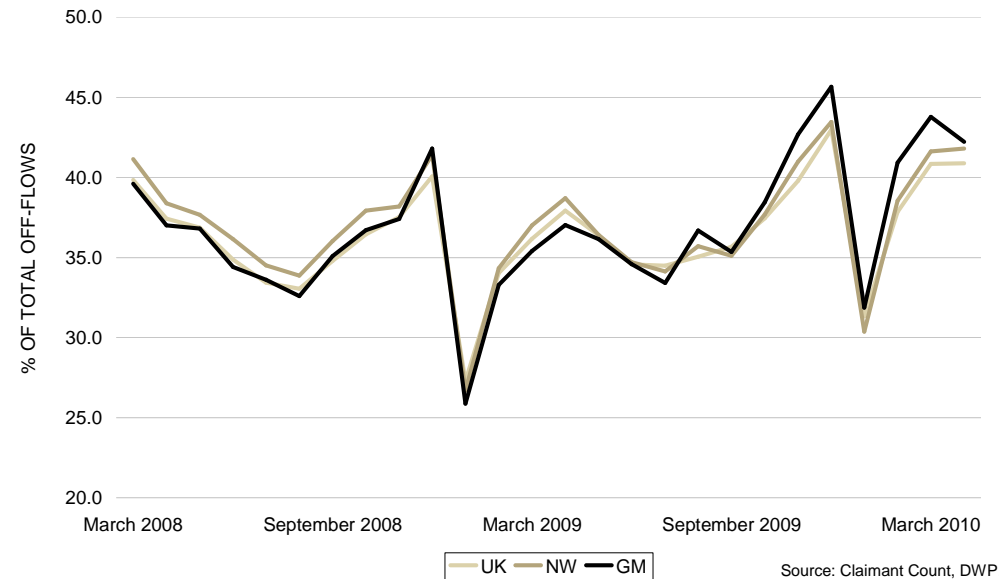
Source: Claimant Count Flows, DWP, 2010

The main reason for an off-flow from the JSA register was because the claimant found work or increased work to more than 16 hours a week (6,385 off-flows). This accounted for 42.2% of the total number of claimants moving off the register. Annually, there was an increase of 23.5% in the number of claimants moving into employment.

Across GM, 415 claimants moved from JSA to another benefit in April 2010. Most of these claimant off-flows were to income support (155). 105 claimants flowed onto IB/ESA, an annual decrease of 27.6%. As can be seen in figure 19, the proportion of off-flows moving to another benefit has fallen by nearly two-thirds in two years.

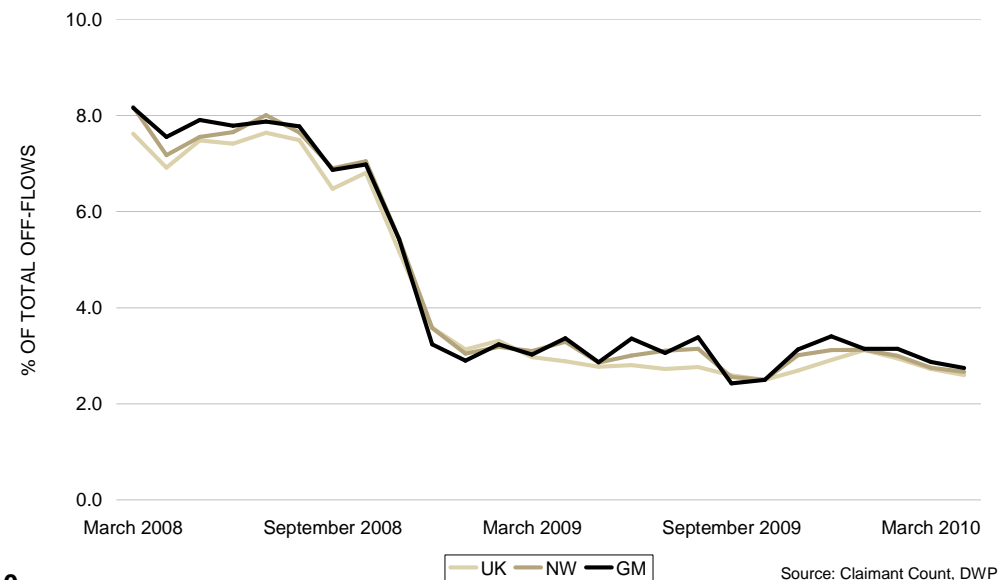
Only 2.4% of off-flows (365 off-flows) moved into government supported training in April, and a further 60 (0.4%) moved into education or approved training. Over a third of claimant off-flows (33.6%) were due to claimants failing to sign on, indicating these claimants may yet claim again. However, DWP expects that the majority of these individuals actually moved into work.

Figure 18: Proportion of off-flows moving into employment, April 2008 – April 2010



Source: Claimant Count, DWP, 2010

Figure 19: Proportion of off-flows moving onto another benefit, April 2008 – April 2010



Source: Claimant Count, DWP, 2010

JOBCENTRE PLUS NOTIFIED VACANCIES: TOTAL VACANCIES

Figure 20: JCP notified vacancies by number, April 2009 – April 2010

District	Ward	JCP Notified Vacancies			
		Number	Monthly Change (%)	Annual Change (%)	Vacancy Ratio to JSA Claimants
		Apr 10	Mar10 – Apr10	Apr09 – Apr10	Apr 10
Manchester	Central	1,687	-27.8%	-6.6%	2.50
Rochdale	Middleton North	500	-2.0%	116.5%	1.30
Bolton	Central	461	26.6%	209.4%	0.74
Salford	Ordsall	445	95.2%	58.9%	1.16
Trafford	Altrincham	444	-28.8%	231.3%	2.19
Salford	Weaste and Seedley	400	-20.9%	136.7%	1.08
Salford	Blackfriars	354	131.4%	101.1%	0.80
Manchester	Woodhouse Park	336	6.7%	145.3%	0.59
Stockport	Bredbury	304	-2.9%	171.4%	1.00
Trafford	Davyhulme East	298	6.0%	33.6%	2.10
Bolton		1,468	31.5%	87.0%	0.18
Bury		796	0.6%	32.9%	0.18
Manchester		4,012	-23.1%	19.0%	0.22
Oldham		1,106	-3.1%	94.7%	0.15
Rochdale		1,521	23.9%	77.9%	0.20
Salford		1,895	4.7%	11.4%	0.25
Stockport		1,536	-18.0%	21.2%	0.24
Tameside		753	2.6%	54.0%	0.11
Trafford		2,350	-23.8%	84.9%	0.50
Wigan		1,124	-14.8%	-6.0%	0.12
Greater Manchester		16,561	-9.6%	36.8%	0.21
North West		40,946	-11.7%	19.4%	0.21
Great Britain		297,741	-0.9%	25.3%	0.20

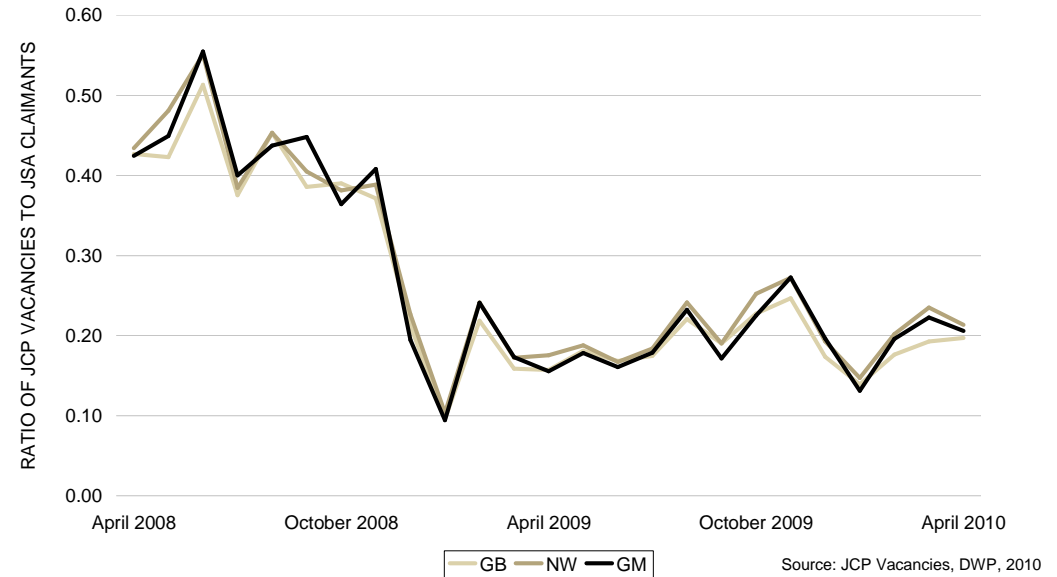
Source: JCP Vacancies, DWP, 2010

The total number of vacancies in GM stood at 16,561 in April 2010 – a 9.6% monthly decrease in notified vacancies. This was a smaller decrease than the North West (11.7%), but greater than the Great Britain decrease (0.9%).

The City of Manchester experienced the highest number of vacancies (4,012). Bolton (31.5%) experienced the greatest monthly increase in vacancies, whilst Trafford (23.8%) experienced the greatest decrease.

Salford experienced the third highest number of vacancies across Greater Manchester, despite having three of the top ten wards by numbers of vacancies – Ordsall (445 vacancies), Weaste and Seedley (400) and Blackfriars (354).

Figure 21: Ratio of JCP notified vacancies to JSA claimants by area, April 2008 – April 2010



Source: JCP Vacancies, DWP, 2010

Within GM, the ratio of vacancies to JSA claimants was highest in Trafford (0.50), though this has fallen from 0.64 last month. Comparatively, Tameside, with a low number of notified vacancies and a relatively higher number of claimants, continues to experience the lowest ratio of 0.11 – the equivalent of 11 job vacancies for every 100 claimants.

As can be seen from figures 22 and 23, sales occupations experienced the greatest numbers of vacancies in the last month (2,556 vacancies). This was followed by vacancies for business and elementary administration and service occupations (2,129 vacancies). However, these occupations were not where the majority of new claimants came from – i.e. elementary trades (see claimant on-flows, above). This suggests a continuing mismatch between the jobs claimants are coming from, and the jobs available in the economy.

The majority of vacancies were within the real estate, renting and business activities sector (10,114 vacancies, or 61.1% of total vacancies). However, this is a decrease of 8.0% on the 10,995 vacancies in March. Electricity, gas and water supply vacancies also saw a significant monthly decrease of 494 vacancies (74.4%).

JOBCENTRE PLUS NOTIFIED VACANCIES: OCCUPATION AND INDUSTRY

Figure 22: Vacancies by occupation, April 2009 – April 2010

Occupation	JCP Notified Vacancies			
	Number	Monthly Change (%)	Annual Change (%)	Percentage of total
	Apr 10	Mar10 – Apr10	Apr09 – Apr10	Apr 10
11 : Corporate Managers	702	35.3%	47.2%	4.2%
12 : Managers and Proprietors in Agriculture and Services	139	41.8%	56.2%	0.8%
21 : Science and Technology Professionals	165	52.8%	19.6%	1.0%
22 : Health Professionals	16	-5.9%	33.3%	0.1%
23 : Teaching and Research Professionals	226	-33.9%	-10.7%	1.4%
24 : Business and Public Service Professionals	154	4.8%	8.5%	0.9%
31 : Science and Technology Associate Professionals	100	16.3%	13.6%	0.6%
32 : Health and Social Welfare Associate Professionals	344	-17.5%	6.8%	2.1%
33 : Protective Service Occupations	3	200.0%	-25.0%	0.0%
34 : Culture, Media and Sports Occupations	216	25.6%	180.5%	1.3%
35 : Business and Public Service Associate Professionals	1,985	-18.7%	65.1%	12.0%
41 : Administrative Occupations	1,087	-36.9%	-13.3%	6.6%
42 : Secretarial and Related Occupations	248	42.5%	29.8%	1.5%
51 : Skilled Agricultural Trades	35	-39.7%	-62.0%	0.2%
52 : Skilled Metal and Electronic Trades	490	50.3%	89.2%	3.0%
53 : Skilled Construction and Building Trades	401	-7.8%	115.6%	2.4%
54 : Textiles, Printing and Other Skilled Trades	282	-2.8%	-10.5%	1.7%
61 : Caring Personal Service Occupations	1,198	-5.5%	39.8%	7.2%
62 : Leisure and Other Personal Service Occupations	210	-40.5%	54.4%	1.3%
71 : Sales Occupations	2,556	-19.0%	17.1%	15.4%
72 : Customer Service Occupations	990	-39.9%	29.1%	6.0%
81 : Process, Plant and Machine Operatives	666	1.5%	155.2%	4.0%
82 : Transport and Mobile Machine Drivers and Operatives	1,054	29.2%	184.9%	6.4%
91 : Elementary Trades, Plant and Storage Related Occupations	1,165	-5.2%	62.0%	7.0%
92 : Elementary Administration and Service Occupations	2,129	16.1%	24.6%	12.9%

Source: JCP Vacancies data, 2010

Figure 23: Vacancies in Manchester by industry, April 2009 – April 2010

Industry	JCP Notified Vacancies			
	Number	Monthly Change (%)	Annual Change (%)	Percentage of total
	Apr 10	Mar10 – Apr10	Apr09 – Apr10	Apr 10
A : Agriculture, hunting and forestry	47	-51.0%	30.6%	0.3%
B : Fishing	0	-	-	0.0%
C : Mining and quarrying	6	0.0%	100.0%	0.0%
D : Manufacturing	436	10.7%	22.1%	2.6%
E : Electricity, gas and water supply	170	-74.4%	115.2%	1.0%
F : Construction	376	-2.3%	81.6%	2.3%
G : Wholesale and retail trade; repair of motor vehicles, motorcycles and personal and household goods	1,332	13.7%	50.2%	8.0%
H : Hotels and restaurants	653	-5.6%	7.4%	3.9%
I : Transport, storage and communication	365	-36.6%	64.4%	2.2%
J : Financial intermediation	338	-23.9%	2.1%	2.0%
K : Real estate, renting and business activities	10,114	-8.0%	49.6%	61.1%
L : Public administration and defence; compulsory social security	562	37.7%	-33.3%	3.4%
M : Education	385	59.1%	54.0%	2.3%
N : Health and social work	1,160	-3.1%	7.1%	7.0%
O : Other community, social and personal service activities	550	-44.9%	29.7%	3.3%
P : Private households with employed persons	47	88.0%	261.5%	0.3%
Q : Extra-territorial organisation and bodies	20	17.6%	-	0.1%

Source: JCP Vacancies data, 2010

Significant shifts in the number of vacancies reported to JCP were experienced over time. Leisure and other personal service occupations, for example, experienced a 40.5% monthly decrease but a 54.4% increase over the year.

Several occupations have seen decreases in vacancies over the past month. A notable exception is transport and mobile machine drivers and operatives, where vacancies have increased by 2.92% (238) over the past month.

TECHNICAL NOTE

Please use caution when interpreting economic data. The data provided in the above tables is given as an indicator of unemployment trends and is reliant on accurate reporting by the DWP and JCP.

There are three areas in which caution should be especially used:

Interpretation of the figures

The JSA claimant figures are exactly those reported by JCP via DWP. However, this is not the official measure of unemployment, and is indicative only of the true level of unemployed individuals. Whilst throughout this document, reference to the JSA claimants includes 'unemployed', 'unemployment' and the 'unemployment rate', the more accurate measure of unemployment, the ILO unemployment rate, is reported quarterly in the Commission for the New Economy's Worklessness Monitor, as it is provided quarterly. As such, it is not reported here.

The difference between the two measures is important to understand. Whilst the JSA claimant count covers all JSA claimants and NIC claimants, it does not cover those individuals who are actively seeking a job, have no job and are not claiming either of these two benefits. For example, individuals that have sufficient funds to support themselves after losing a job may not wish to, or be eligible to, claim JSA. As such, they are unemployed, but are not counted in the claimant count. They would, however, be counted in the ILO unemployment rate.

Vacancy data also requires some interpretation. The figures provided by JCP are all those notified to JCP. They do not, however, cover the entirety of the vacancies in the market, and it has been estimated that JCP notified vacancies make up roughly 40% of the total number of vacancies within the economy.

Rounding of the figures

DWP round some figures when reporting to protect the anonymity of claimants; and some figures have been rounded by the Commission for the New Economy. As such, the figures in some tables may not sum. This is not due to inaccuracies.

In addition, the age and duration data for JSA claimants excludes non-computerised clerical claims, which account for around 1% of claims. The 1% difference does not make a significant difference to the figures.

Calculations by the Commission for the New Economy

Percentage changes are calculated by the Commission for the New Economy. These calculations need to be treated with caution. The base values used affects percentage increases. For example, for a small base, a small change in the claimant volume can lead to a large percentage change. This is particularly relevant at the ward level, where the addition or subtraction of just a small number of individuals can lead to large percentage increases / decreases.

Calculations are also provided for the vacancy to JSA claimant ratio. These figures take the number of claimants and vacancies together, and provide a value for how many vacancies there are in any one area for every JSA claimant in that area. These calculations are not provided by ONS or DWP, but instead are an indicative calculation provided to show the jobs to labour ratio for the unemployed in any one area.

GLOSSARY

DWP

Department for Work and Pensions.

JCP

Jobcentre Plus. JCP is a government agency supporting people of working age from welfare into work and helping employers to fill their vacancies.

Jobseeker's Allowance

Jobseeker's allowance (JSA) is the most common unemployment benefit. It is mainly paid when eligible individuals don't have a job and are looking for work, however in certain circumstances it can be claimed by individuals that are in work but working less than 16 hours a week. There are 2 types of JSA: (1) 'Contribution-based Jobseeker's Allowance' which is paid at a standard rate if individuals have paid or been credited with enough class 1 National Insurance contributions; and (2) 'Income-based Jobseeker's Allowance' which is based on individuals' income and savings and is paid at a rate based on individual circumstances. A long-term claimant is defined as someone who has claimed JSA for more than 6 months.

Wards

Wards refer to the 2003 Census Area Statistics (CAS) wards, rather than the 2005 CAS wards. This is because the 2003 wards have defined populations and working age populations. There is also a level of consistency in using these wards for continual comparison.

Working Age Population

The total number of individuals within an area that are female aged 16-59 and male aged 16-64.

SOURCES

Annual / Quarterly Change

Source: Calculations by the Commission for the New Economy;

JCP Vacancies

Source: Vacancies notified to JCP, DWP, 2010;

JSA Claimants

Source: Claimant Count – Age and Duration, DWP, 2010 – this dataset excludes non-computerised clerical claims, which constitute approximately 1% of claimants;

JSA Claimant Rate

Source: Claimant Count – Age and Duration, DWP, 2010; Resident-based Claimant Count Denominators, DWP, 2010; Calculations by the Commission for the New Economy;

Long-Term JSA Claimants

Source: Claimant Count – Age and Duration, DWP, 2010;

Notified redundancies

Source: Notified redundancies from HR1 submissions, JCP, 2010;

Short-term JSA Claimants

Source: Claimant Count – Age and Duration, DWP, 2010;

Working Age Population

Source: Resident-based Claimant Count Denominators, DWP, 2010;

Youth JSA Claimants

Source: Claimant Count – Age and Duration, DWP, 2010;